

# AKTIV



[www.gohymer.com](http://www.gohymer.com)

1.844.GO HYMER (464.9637)

**EHYMER**



## Coach features

	Standard	Optional
Air conditioner – 110 V, 11,000 BTU roof mount	X	
Awning – 12' / 3,657 mm power awning	X	
Bathroom – permanently enclosed full bathroom	X	
Battery – 2 x 6V AGM batteries	X	
Detectors – smoke, propane and CO	X	
EcoTrek 400 lithium power module		X
External power connection – w/coax and RCA plugs	X	
Furnace – Truma Combi air and water heater - 14,300 BTU	X	
Generator – underhood 280 AMP, 12V	X	
Mattress – foldable, rear queen bed	X	
Mattress – for additional sleeping at the front of the RV		X
Microwave oven – 110 V, 20 L / 0.7 cu. ft., 700 W	X	
Monitor panel – water, propane and battery charge levels	X	
Power inverter/converter/transfer switch – 12/110 V, 2,000 W	X	
Propane tank – 5.9 U.S. gal. / 22 L	X	
Refrigerator – 12 V/110 V, 3.1 cu. ft.	X	
Safety – five point safety harness with child seat child seat anchors in second row seating	X	
Screen package – passenger side door, rear cargo door	X	
Solar charging system – 250W with charge controller		X
Stove – propane; two burner recessed with flush cover	X	
TV – 24" HD flat screen on rotating bracket with remote and DVD player w/HDMI hookup	X	
VoltStart – auto-start battery protection technology		X

## Specifications

Base model	Ram Promaster 2500 regular van
Seating capacity	Four
Sleeping capacity	Up to four
Rear queen bed (width x length)	72.5" x 55.5" (1842 mm x 1397 mm)
Interior standing height	6' 1" / 1854 mm
Interior aisle width	19" / 483 mm
Fuel type (capacity)	Gas – 24 U.S. gal. / 91 L
Cassette toilet system	4.6 U.S. gal. / 17 L
Wheelbase	159" / 4039 mm
Exterior length	19' 7" / 5969 mm
Exterior width (excluding mirrors)	6' 11" / 2108 mm
Exterior height (with roof AC)	9' 5" / 2870 mm
Maximum GVWR	9350 lbs. / 4241 kg
Loaded vehicle weight	8050 lbs. / 3651 kg
Occupant and Cargo Carrying Capacity	1300 lbs. / 590 kg
Fresh water capacity	30 U.S. gal. / 114 L
Gray water capacity	23 U.S. gal. / 110 L

## Exterior paint options



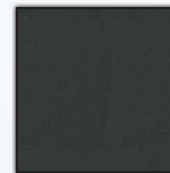
Sandstone Pearl



Silver Metallic



Bright White



Granite Metallic



## Chassis features

	Standard	Optional
Airbag – driver and passenger	X	
Alternator – 220 AMP	X	
Axle – rear - 3.86 ratio	X	
Battery – 800 AMP	X	
Brakes – anti-lock (ABS), four wheel disc	X	
Camera – rear-view backup	X	
Cassette toilet system	X	
Climate control	X	
Continental spare tire carrier and spare tire	X	
Cruise control	X	
Engine – 3.6 L gas V6, 24 valve	X	
External quick connect propane	X	
Interior LED lighting	X	
Power – 209 kW/280 HP	X	
Power mirrors	X	
Power front door step – driver and passenger		X
Power side entry door step	X	
Radio – AM/FM/CD/DVD/USB/GPS navigation, Bluetooth and steering wheel controls	X	
Receiver hitch – Class 3 with 4 & 7 pin connectors	X	
Stability program – including wind assist, sway assist, drift compensation, trailer sway, engine drag control, rollover mitigation, electronic stability control.	X	
Telescopic steering	X	
Tires – LT225/75R16E black wall	X	
Torque – 352 Nm/260 lb.-ft.	X	
Transmission – automatic 6-speed TE	X	
Wheels – 16" aluminum polished	X	
Window operation – power; front doors	X	

## Layout



Day Layout



Night Layout



# Worry free travel, backed by the best in the business.

## Industry leading – 6-year transferable RV warranty

The 6-year unlimited mileage/km motorhome warranty covers the manufacturing of the motorhome, appliances, electronics, plumbing and EcoTrek batteries. The original manufacturer's warranty on all appliances will be applied first. This warranty excludes the complete chassis (original chassis manufacturer warranty applies, please refer to chassis manufacturers website for complete warranty details) and AGM batteries (AGM batteries have a normal one-year manufacturer's warranty.)

The 6-year unlimited mileage/km motorhome warranty is fully transferable to future owners. A warranty transfer card can be found in the back of the model owner's manual.

## ProMaster Chassis Warranty

The 5-year/100,000 mile or 100,000 kilometer Powertrain Limited Warranty covering the cost of repairs on all covered powertrain components – engine, transmission and drive system for most new Ram vehicles. 3-year/36,000 mile or 60,000 kilometer limited warranty provides bumper-to-bumper coverage of your vehicle, from the body to the electrical system. Refer to chassis manufacturers website for complete details.

## Two-year roadside RV assistance

With every new Hymer Aktiv, you can enjoy two years of free coverage with the Roadside RV Assistance program. This program offers a wide range of services to assist you should you need it, including towing, tire changes, jump-start services and technical support to name a few. You can now confidently take to the roads knowing we are behind you through every adventure.



## ERWIN HYMER GROUP NORTH AMERICA, INC.

25 Reuter Drive, Cambridge, Ontario, N3E 1A9 | **Toll-free:** 1.844.GO HYMER (464.9637) | **Fax:** 519.745.1160 | **Email:** info@gohymer.com



ERWIN HYMER GROUP NORTH AMERICA, INC. reserves the right to make changes at any time, without notice, in colors, materials, equipment, specifications and models. This information is intended as a guide only; please visit [www.gohymer.com](http://www.gohymer.com) for a complete list of specifications and options. Some motorhomes may be shown with equipment that is optional. Accessories shown in the photography are not included. The limited warranty on this unit covers personal use of the RV only. Rental or commercial use of RV voids the warranty on the unit.

08 - 2017

